

# MealMaster™ Multi-Feeder System

*Individual feeding with Group Housing*

**Griffith  
Elder**



- Precise recording of forage intake
- Dispense concentrates on the same feed fence
- Up to 4 cows per bin
- Once daily re-filling of bins
- High sides and a nose bar stop spillage
- Compatible with most makes of transducer
- Tip over bin for easy cleaning

The Griffith Elder MealMaster™ Multi-Feeder System is an integrated system for precise control and monitoring of the complete diet intake of cattle.

The system is controlled from a central computer which records quantity and duration of all meals for each animal. Constraints can be placed on each animal for times of feeding and quantity. The computer program contains comprehensive reporting and data analysis routines.

## Equipment

Each feed station contains the following main components:

- A feed bin mounted on weight sensors
- Or a concentrate feeder with up to 3 ingredients
- A tombstone barrier
- A cow access door
- An automatic identification system
- A local display

The feed stations are all linked to a central computer. Up to 255 feeders can easily be operated from one computer without slowing the system. Each station can have a different feed in the bin to give maximum flexibility in management of the feeding regime.

**Griffith Elder and Company Ltd,**  
Rougham Hill,  
Bury St Edmunds,  
Suffolk  
IP33 2RU  
England

Telephone: +44 (0) 1284 763616  
Fax: +44 (0) 1284 700822  
Email: sales@griffith-elder.com  
Internet: www.griffith-elder.com



### Roughage Intake

The feed bins are mounted on precision weight sensors which detect every movement of the bin and are accurately calibrated in the factory to weigh within 0.1 kg. This means that every mouthful that is taken is accurately recorded.

As a cow approaches the feed station, it is automatically identified. The feed station transmits the cow number to the computer which checks the constraints on the cow, and whether it can feed at that station. The start of a meal weight is taken and, if allowed, the access door is opened. When the cow leaves the feed station the access door closes and the end of meal weight is taken. The computer records all the details of the cow at the feed station together with start and finish times of the meal.

### Concentrates

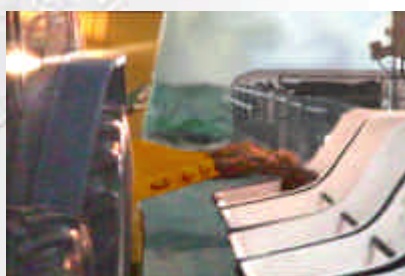
Concentrates dispensers are available to be placed on the feed fence in between roughage bins. This gives the opportunity to dispense concentrates related to roughage intake as well as normal out of parlour feeding regimes. There are two models to choose from, either with two ingredients or three, which are dispensed using calibrated single turn augers into the trough. Settings in the computer allow proportions of each ingredient to be given in sequence to an animal so that proportionally throughout the day the correct amount of each will have been fed out. The concentrates bins may be re-filled by hand or by automatic auger from large storage bins.

### Identification

Animals are identified either by neck or by ear transponders. The Griffith Elder system can read almost all types of transponder currently used in the dairy and beef industries. If neck transponders are used the detection antenna can be embedded in the access door, whereas for ear transponders a loop round the entry door is favoured so that the system never misses the identification of a cow.

**Griffith Elder and Company Ltd,**  
Rougham Hill,  
Bury St Edmunds,  
Suffolk  
IP33 2RU  
England

Telephone: +44 (0) 1284 763616  
Fax: +44 (0) 1284 700822  
Email: [sales@griffith-elder.com](mailto:sales@griffith-elder.com)  
Internet: [www.griffith-elder.com](http://www.griffith-elder.com)



### Roughage Feed Bins

The Griffith Elder roughage bins are made from glass reinforced plastic (GRP). The bins are specially shaped with high sides to reduce spillage and rounded bottom to make getting all the food easy for the animals. A nose bar is fitted inside the bin to prevent the cows from swinging their heads and throwing the feed out. The bins are easily filled from a diet mixer wagon and have a sloping back for the purpose.

There are two models of roughage bin, 330 litres for 2 cows per bin and 550 litres for 4 cows per bin.

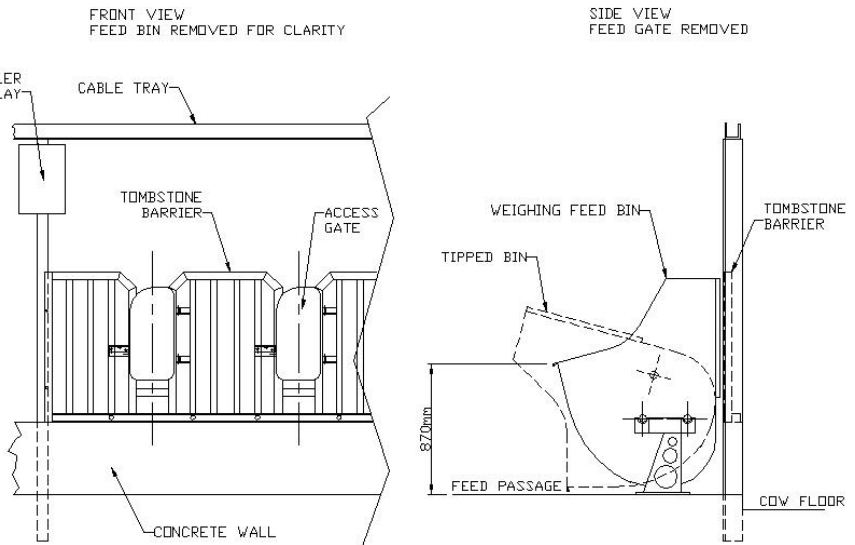
The roughage bins tip over for cleaning out. This makes the sweeping out of refusals very quick and easy. A simple sprung clip mechanism means the whole job can be done by one person, while the rounded corners and bottom of the bin speed up the cleaning out. The bins can be easily lifted from their mounts and removed completely for pressure washing.

### Local Display

A local display on the feed fence gives the operator a readout of the animal identification number and the status of each station. The weight of feed in each roughage bin is shown and lights on the indicators show the status of the doors. Indicators next to the concentrates dispensers control the turns of the augers and show the status of the system. Calibration of the augers is also done from the indicator to ensure accurate results at all times. Continuous communication with the central computer keeps the system up to date. The local indicators are a useful aid to the operator when checking that each feed station is operating correctly.

**Griffith Elder and Company Ltd,**  
Rougham Hill,  
Bury St Edmunds,  
Suffolk  
IP33 2RU  
England

Telephone: +44 (0) 1284 763616  
Fax: +44 (0) 1284 700822  
Email: [sales@griffith-elder.com](mailto:sales@griffith-elder.com)  
Internet: [www.griffith-elder.com](http://www.griffith-elder.com)



## Description

### Roughage Bin

Capacity	330 litres or 550 litres
Depth	1100 mm
Height	1400 mm
Weighing Accuracy	+/- 0.1 kg
Material	GRP
Feed Station width	950 mm or 1300 mm
Tombstone Barrier	Galvanised Steel
Access Door	GRP
Concentrates Dispenser	2 or 3 ingredients
Capacity	50 kg per ingredient
Material	Galvanised / Stainless Steel
Communication	RS 422
Power Requirement	110 / 240 volts AC

Griffith Elder provide a complete service to customers including advice on appropriate location, supply of equipment, installation and commissioning. We design and manufacture the complete system in-house and have the expertise to advise on technical issues which affect the complete diet intake system.

Walk-N-Weigh™, the walk through cow weigher, platform scales and computer programs to bring in data from milking parlour software are available to increase the versatility of the MealMaster™ system.

Details of the MealMaster Software are on a separate leaflet.

**Griffith Elder and Company Ltd,**  
 1 Oaklands Park,  
 Bury St Edmunds,  
 Suffolk  
 IP33 2RW  
 United Kingdom

Telephone: +44 (0) 1284 763616  
 Fax: +44 (0) 1284 700822  
 Email: sales@griffith-elder.com  
 Website: www.griffith-elder.com