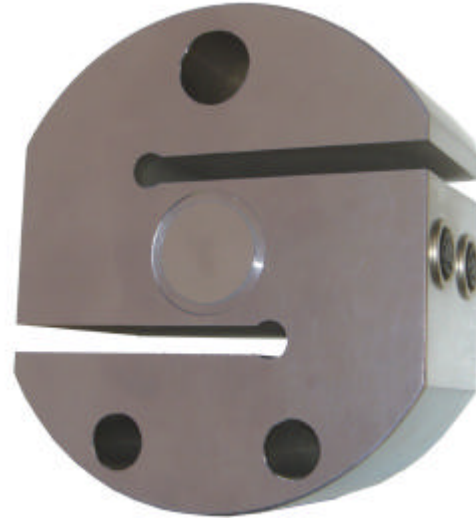


## S Type Load Cell 6 tonnes



**ST-6T-CA**  
**ST-6T-SA**  
**ST-6T-CD**

<b>Model</b>	ST: S type
<b>Capacity</b>	6T: 6,000 kg
<b>Material</b>	C: Carbon Alloy Steel S: Stainless Steel 17-4 ph
<b>Type</b>	A: Analogue D: Digital
<b>Temperature Range</b>	-40 to +70°C
<b>Safe Overload</b>	150%
<b>Maximum Overload</b>	300%
<b>Cable</b>	A: 10 metre screened (33 feet) D: Connector
<b>Ingress Protection</b>	Sealed to IP68
<b>Excitation</b>	
<b>Recommended</b>	10V to 12V dc
<b>Maximum</b>	15V
<b>Output at rated load</b>	A: 2 mV/V $\pm$ 0.1% D: Weightel digital Protocol Plus or minus 0.01 %
<b>Accuracy</b>	

**Griffith Elder and Company Ltd**  
1 Oaklands Park  
Bury St Edmunds  
Suffolk  
IP33 2RW  
United Kingdom

Telephone: +44 1284 763616  
Fax: +44 1284 700822  
Email: sales@griffith-elder.com  
Internet: www.griffith-elder.com

Digital Load Cells use the Weightel™ Plug-and-Weigh™ Technology for ease of installation and maximum accuracy. They are factory calibrated.

ST 6 tonne